

# HOME.COM4 WITH RS485

**HARVIA**
*Sauna & Spa*

## Description

**home.com4 BLACK RS485** 1-052-984 / HC4-B-RS485

### POWER VALUES:

- Heating system: 10,5 kW
- Evaporator: 3,5 kW
- Additional output: 500 W (dimmbable)
- Light and fan: 100 W (switchable)

### OPERATION:

- 2,4" high-resolution color display
- Intuitive turn&push user menu
- 13 menu languages:  
DE/EN/SV/FR/SL/ES/ET/FI/IT/NL/PL/CS
- Full usability via MySento App

### MAIN FUNCTIONS

- Single or dual sensor system (Bench- or humidity sensor - must be ordered separately)
- Intelligent PI control of the temperature
- Real-time-clock with weekday setting
- Minute-after-minute setable heating time limiter with maximum values of 6 / 12 / 18 / 24 h
- Adjustable preset timer available to 6/ 12 / 18 / 24 h
- Phase rolling for extending the service life of the relays
- Standard compliant remote start via potential-free contact (permanent contact)
- Remote start of 2 different user profiles
- Input for safety shut-down device
- Eco-Mode (efficient sauna breaks)
- Limitable maximum temperature
- Power extension outputs

### EVAPORATOR

- Operation with real humidity sensor or clocked (sensor must be ordered separately)
- Post-drying program with fan
- Humidity indicator (only with humidity sensor)
- Activatable single-operation-mode
- Optical and acoustical water level alarm
- Menu item can be completely hidden



### ADDITIONAL OUTPUT

- Up to 500 W dimmbable or 3500 W switchable, e.g. for Infrared heaters or IR heating plates
- Foil sensor input (for using IR heating plates)

### WEEKLY TIMER

- Fully automated operation with 14 programs
- Daily adjustable (Mo-Su)
- Direct start of user profiles

### MUSIC

- Bluetooth 4.0 with a range up to 30 m
- Music-Player controllable via user menu
- Integrated amplifier (2 x 2,8 W @ 4 Ohm)

### DMX COLORLIGHT

- 4 light groups individually controllable
- Gradients, time, brightness and transition time individually adjustable
- Supports all common DMX-512-A devices

### EXTRA FUNCTIONS

- Childlock avoids unintentional heating
- Technical menu with a wide range of settings

## HOME.COM4 WITH RS485

**HARVIA**

Sauna &amp; Spa

**Specifications:**

- Dimensions: 210 x 294 x 53 mm
- Class of protection: IPX4 (splash proof)
- Nominal voltage: 400 V AC, 50 Hz

**ENVIRONMENTAL:**

- Temperature: -10° C to +40° C
- Humidity: max. 95%, not condensing

**MySentio APP**

Using the sauna control conveniently via smartphone or tablet?  
- No problem with **home.com4**!

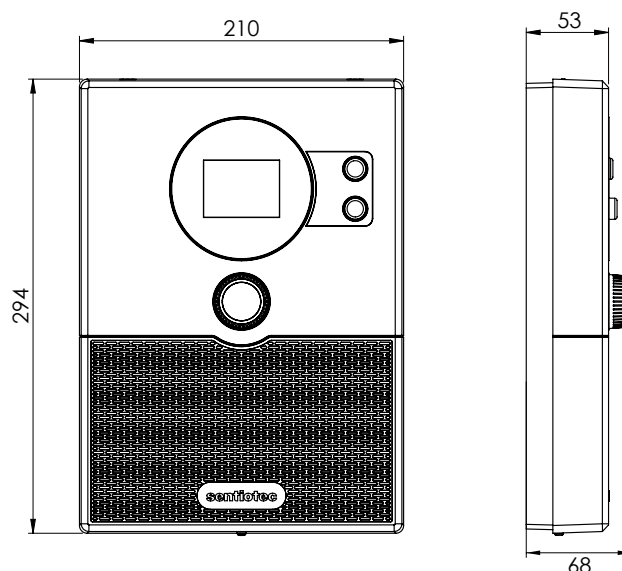
Just download the free **MySentio app** and connect it to your **home.com4** sauna control - Done!



You do not have a **home.com4** sauna control yet? Simply download the app and start the **Demoversion**.

**Connecting cables:**

- Supply line: min. 5 x 2,5 mm<sup>2</sup>
- Heater supply line (temp. resistant up to 150 °C): min. 2,5 mm<sup>2</sup>
- Sensor leads (temp. resistant up to 150 °C): min. 0,5 mm<sup>2</sup>
- Light: min. 1,5 mm<sup>2</sup>
- Fan: min. 1,5 mm<sup>2</sup>

**DMX Colorlight:**

DMX (Digital-Multiplex) is a common digital control protocol used to control color lights and effects. Theoretically, an infinite number of devices (DMX drivers) can be connected and operated on this BUS.

The following DMX protocols are supported:

- RGBW 8 Bit
- RGBW 16 Bit
- Hue-Value-Saturation 8 Bit (e.g. COLLAXX)
- Hue-Saturation-Value 8 Bit

Additional synchronizing-function for wireless DMX devices.

**Optional accessories:**

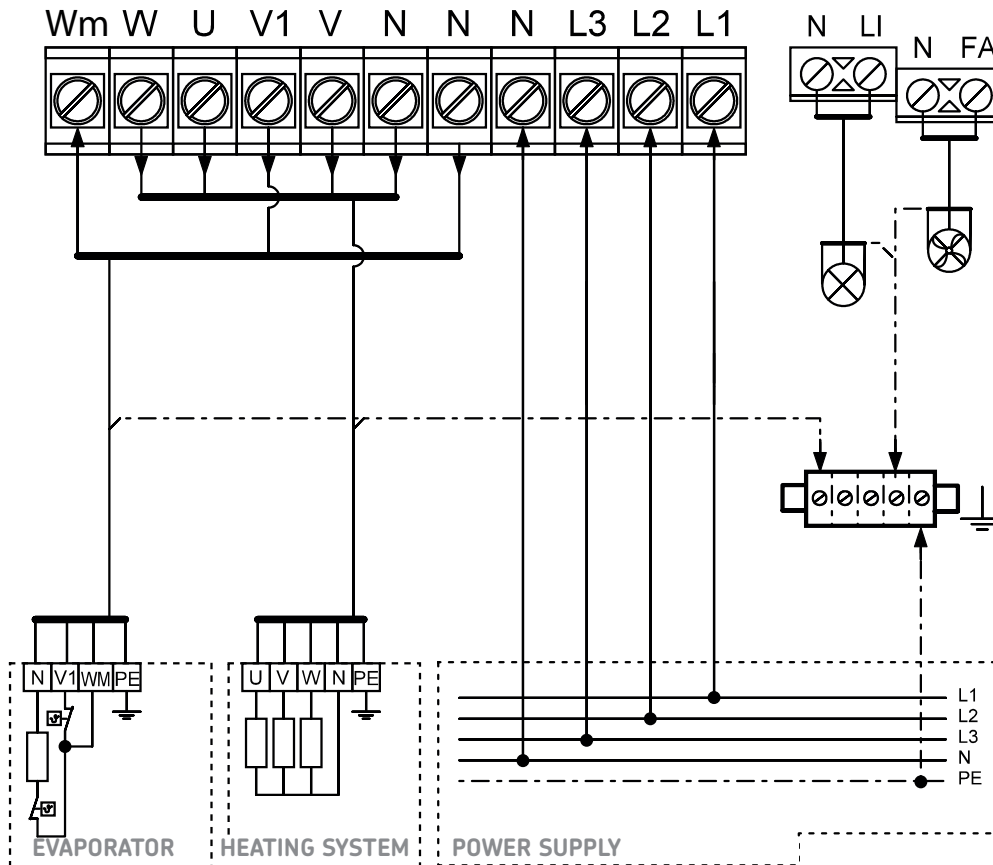
- Benchsensor (1-009-231 / 0-F2), sensor leads 1,5m
- Humidity-temperature sensor (1-010-081 / 0-FTS2), sensor leads 3m
- Foil sensor (1-014-445 / P-ISX-FF), sensor leads 3m
- Power extension (1-008-779 / 0-S2-18, 1-009-280 / 0-S2-30)
- Safety shutdown (SFE-xxxx)
- Wooden case for all sensors (bright wood F1/F2 1-041-518 / SC-F1F2-H or dark wood F1/F2 1-041-519 / SC-F1F2-D, Humidity-temperature sensor 0-FTS2 bright 1-041-520 / SC-FTS2-H or dark 1-041-521 / SC-FTS2-D)

# HOME.COM4 WITH RS485

**HARVIA**

Sauna & Spa

## Connection plan basic-module:



## TERMINAL ASSIGNMENT

Wm	Water deficit
W	Heater phase W
U	Heater phase U
V1	Evaporator phase
V	Heater phase V
N	Neutral
L3	Supply L3
L2	Supply L2
L1	Supply L1
LI	Phase light
FA	Phase fan

## Recommended fusing:

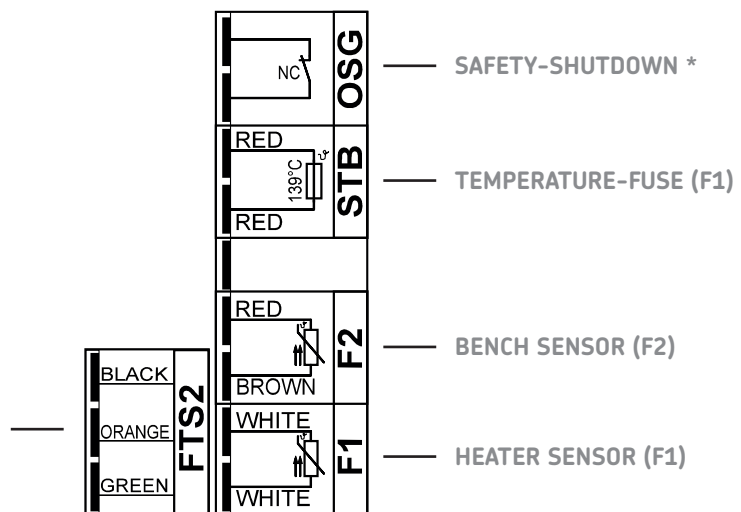
3 x 20 A (CAT III)  
RCD: 30 mA

## Connection plan sensors:

### SENSOR LEADS:

- Min. cross-section: 0,5 mm<sup>2</sup>
- Temperature resistant: 150° C
- Length may not exceed 10 m

### HUMIDITY-TEMPERATURE SENSOR (FTS2)



\* If no safety shut-off is installed, a jumper must be fitted at this terminal.

EN 60335-2-53 states that sauna control units with a remote start or preset timer function may only be used for operating and regulating a sauna heater which has satisfied the combustion test described in paragraph 19.101. Alternatively, a suitable safety shut-off device can be installed in or above the heater. This shuts the sauna heater off when objects, e.g. a towel, are placed on the sauna heater.

# HOME.COM4 WITH RS485

**HARVIA**

Sauna & Spa

## Connection plan extension-module:

- The power supply comes directly from basic-module

